

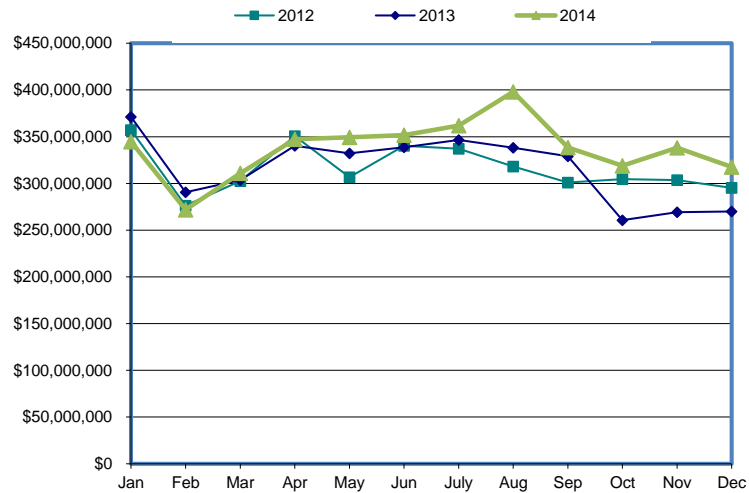
Harrison County Retail Sales

	2012	2013	2014
Jan	\$357,177,070	\$371,139,792	\$344,697,560
Feb	\$276,311,697	\$290,495,862	\$271,925,507
Mar	\$302,462,378	\$303,576,357	\$310,925,538
Apr	\$350,677,258	\$340,345,520	\$347,256,866
May	\$306,584,877	\$332,304,206	\$349,253,515
Jun	\$340,135,302	\$338,663,944	\$351,581,405
July	\$337,216,534	\$346,470,504	\$361,883,507
Aug	\$318,184,939	\$338,134,806	\$397,976,037
Sep	\$300,993,201	\$328,940,512	\$338,387,325
Oct	\$304,629,178	\$260,684,730	\$318,897,420
Nov	\$303,633,880	\$269,090,197	\$338,082,703
Dec	\$295,253,764	\$269,994,355	\$317,720,809

Source: Mississippi Department of Revenue

Retail Sales Harrison County

2007:	5,184,128,925
2008:	4,602,477,843
2009:	4,242,217,969
2010:	4,031,095,721
2011:	3,830,809,920
2012:	3,793,260,078
2013:	3,789,840,785
2014:	4,048,588,194



12281 Intraplex Parkway
 Gulfport, MS 39503
 228-896-5020 • Fax 228-896-6020
 mscoast.org