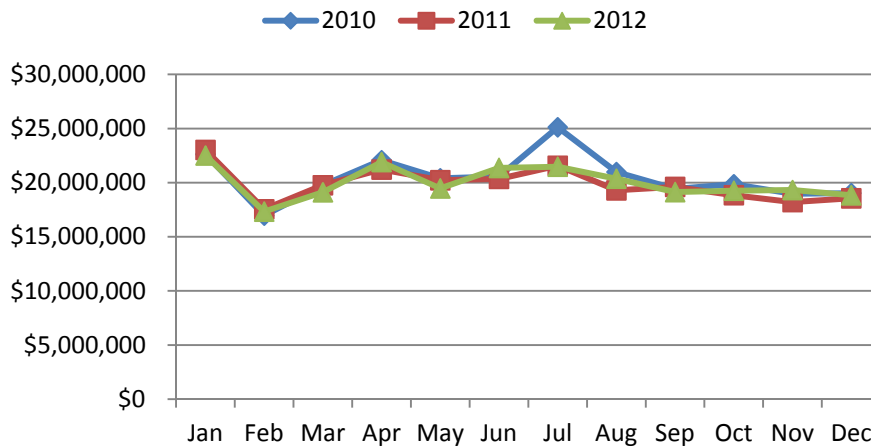


Harrison County Retail Sales Tax

	2010	2011	2012
Jan	\$22,626,645	\$23,023,953	\$22,510,407
Feb	\$16,957,366	\$17,541,016	\$17,325,998
Mar	\$19,766,465	\$19,764,481	\$19,112,073
Apr	\$22,075,153	\$21,210,680	\$21,897,395
May	\$20,410,471	\$20,223,373	\$19,470,140
Jun	\$20,560,587	\$20,349,805	\$21,363,749
Jul	\$25,119,207	\$21,566,586	\$21,46,9701
Aug	\$20,988,293	\$19,291,128	\$20,367,848
Sep	\$19,433,514	\$19,60,7547	\$19,131,397
Oct	\$19,853,213	\$18,843,551	\$19,253,827
Nov	\$18,969,665	\$18,201,209	\$19,320,174
Dec	\$19,032,968	\$18,553,719	\$18,835,641

Retail Sales Tax Harrison County

2007:	\$298,373,392
2008:	\$269,499,349
2009:	\$249,644,399
2010:	\$245,792,547
2011:	\$238,177,053
2012:	\$240,058,355



12281 Intraplex Parkway
 Gulfport, MS 39503
 228-896-5020 • Fax 228-896-6020
 mscoast.org