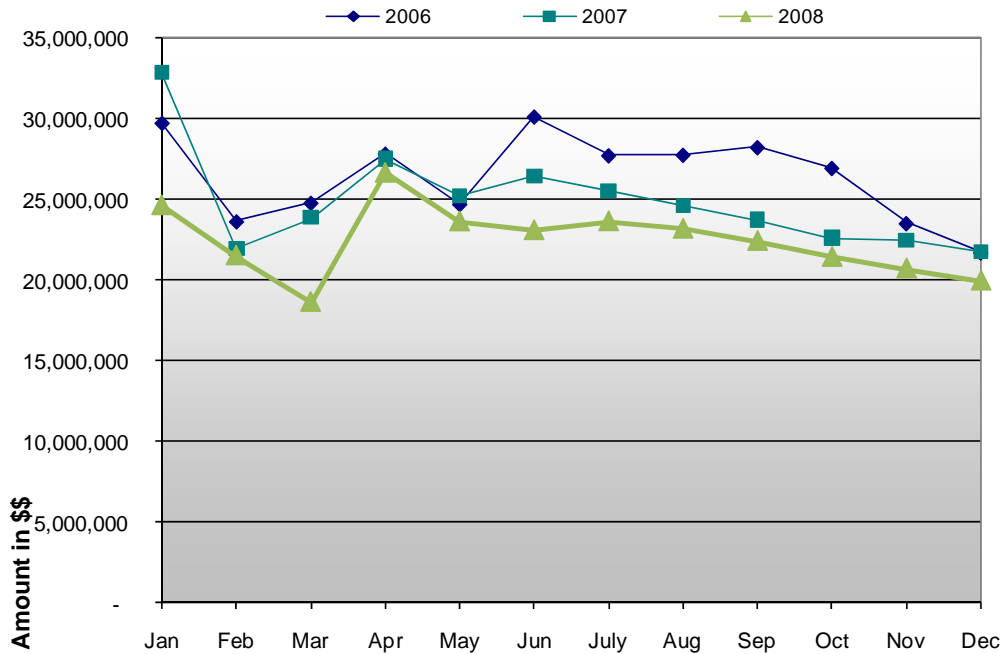


Harrison County Retail Sales Tax Collections

Harrison County Retail Sales Tax Collections					
2006	Taxes	2007	Taxes	2008	Taxes
Jan	29,693,253	Jan	32,793,463	Jan	24,645,576
Feb	23,621,718	Feb	21,949,898	Feb	21,517,778
Mar	24,769,613	Mar	23,844,583	Mar	18,623,815
Apr	27,794,039	Apr	27,461,831	Apr	26,666,481
May	24,692,419	May	25,205,578	May	23,636,719
Jun	30,082,613	Jun	26,431,793	Jun	23,088,340
July	27,692,173	July	25,506,439	July	23,645,051
Aug	27,725,329	Aug	24,597,630	Aug	23,174,809
Sep	28,193,529	Sep	23,724,530	Sep	22,422,692
Oct	26,913,464	Oct	22,621,887	Oct	21,426,413
Nov	23,508,668	Nov	22,475,505	Nov	20,704,817
Dec	21,701,255	Dec	21,760,255	Dec	19,946,858

Source: Mississippi State Tax Commission

Harrison County Retail Sales Tax Collections



12292 Intraplex Parkway
 Gulfport, MS 39503
 228-896-5020 • Fax 228-896-6020
 mscoast.org