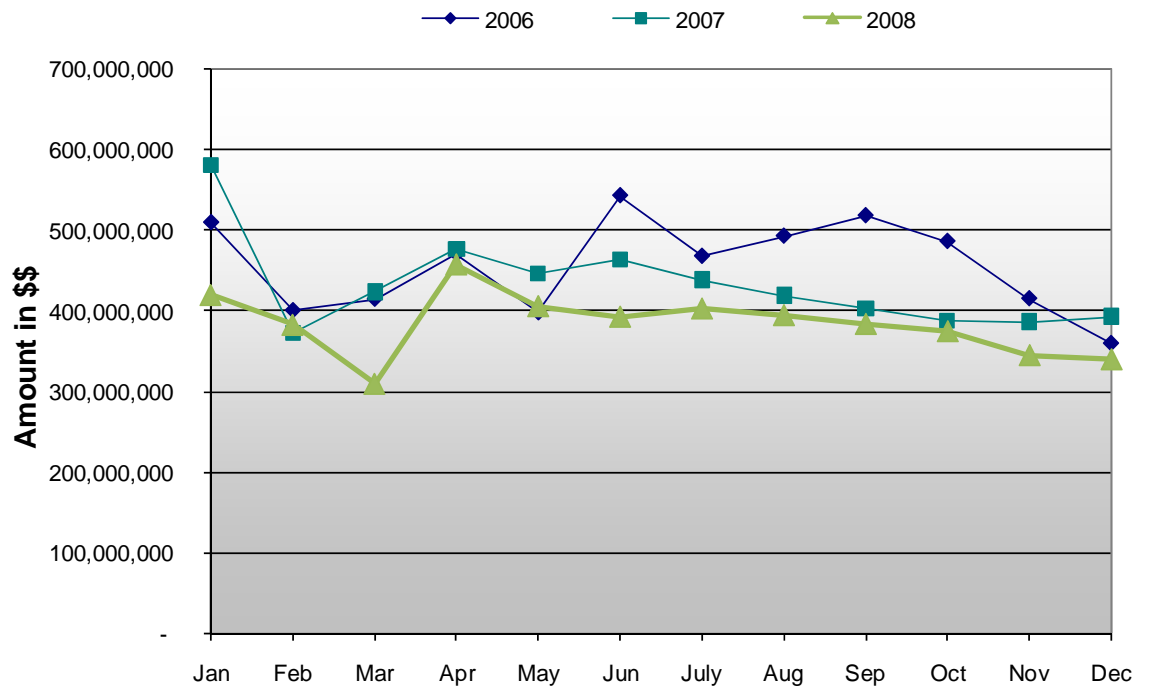


Harrison County Retail Sales

Harrison County Retail Sales							
2006	Sales		2007	Sales		2008	Sales
Jan	508,401,552		Jan	580,406,267		Jan	418,918,840
Feb	399,920,218		Feb	372,086,344		Feb	382,051,976
Mar	413,996,366		Mar	423,189,220		Mar	309,247,857
Apr	469,522,835		Apr	475,743,548		Apr	456,728,384
May	397,402,211		May	445,190,520		May	405,206,458
Jun	541,584,179		Jun	463,879,162		Jun	392,154,988
July	466,924,077		July	438,029,935		July	402,316,120
Aug	491,731,259		Aug	418,662,627		Aug	394,065,232
Sep	516,939,411		Sep	401,605,495		Sep	383,221,304
Oct	485,222,104		Oct	387,111,396		Oct	374,269,691
Nov	414,614,574		Nov	385,726,250		Nov	344,720,888
Dec	359,375,408		Dec	392,498,161		Dec	339,576,105

Source: Mississippi State Tax Commission

Harrison County Retail Sales



12292 Intraplex Parkway
 Gulfport, MS 39503
 228-896-5020 • Fax 228-896-6020
 mscoast.org