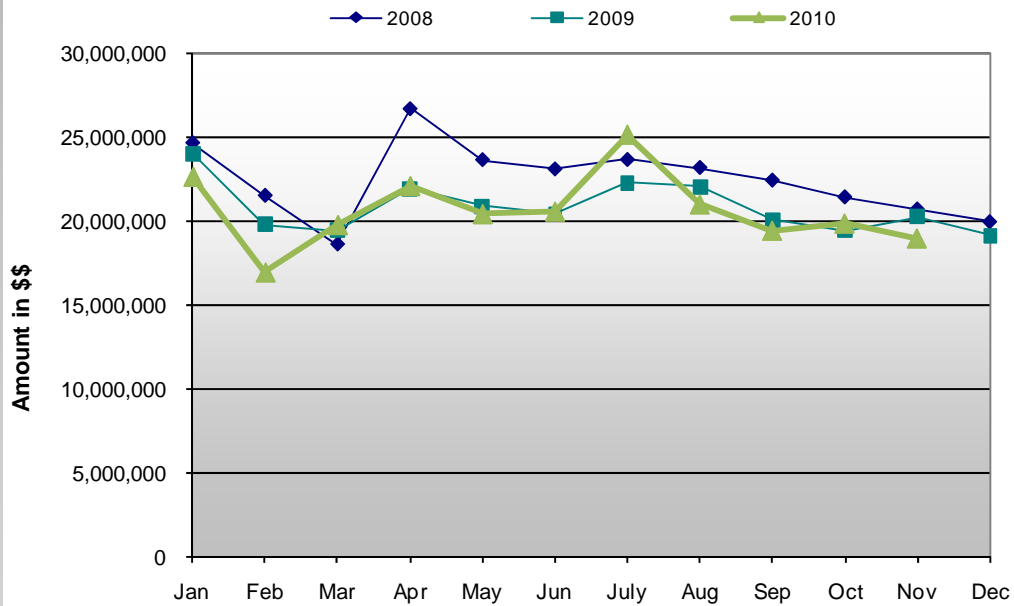


Harrison County Retail Sales Tax

	2008	2009	2010
Jan	24,645,576	23,994,004	22,626,645
Feb	21,517,778	19,787,475	16,957,366
Mar	18,623,815	19,441,225	19,765,465
Apr	26,666,481	21,933,295	22,075,153
May	23,636,719	20,869,176	20,410,471
Jun	23,088,340	20,461,732	20,560,587
July	23,645,051	22,263,734	25,119,207
Aug	23,174,809	22,041,075	20,988,293
Sep	22,422,692	20,041,421	19,433,514
Oct	21,426,413	19,425,309	19,853,213
Nov	20,704,817	20,266,068	18,969,665
Dec	19,946,858	19,119,885	

2007: 298,373,392
2008: 269,499,349
2009: 249,644,399
2010 Nov.: 226,759,579

Source: Mississippi State Tax Commission



12281 Intraplex Parkway
 Gulfport, MS 39503
 228-896-5020 • Fax 228-896-6020
mscoast.org