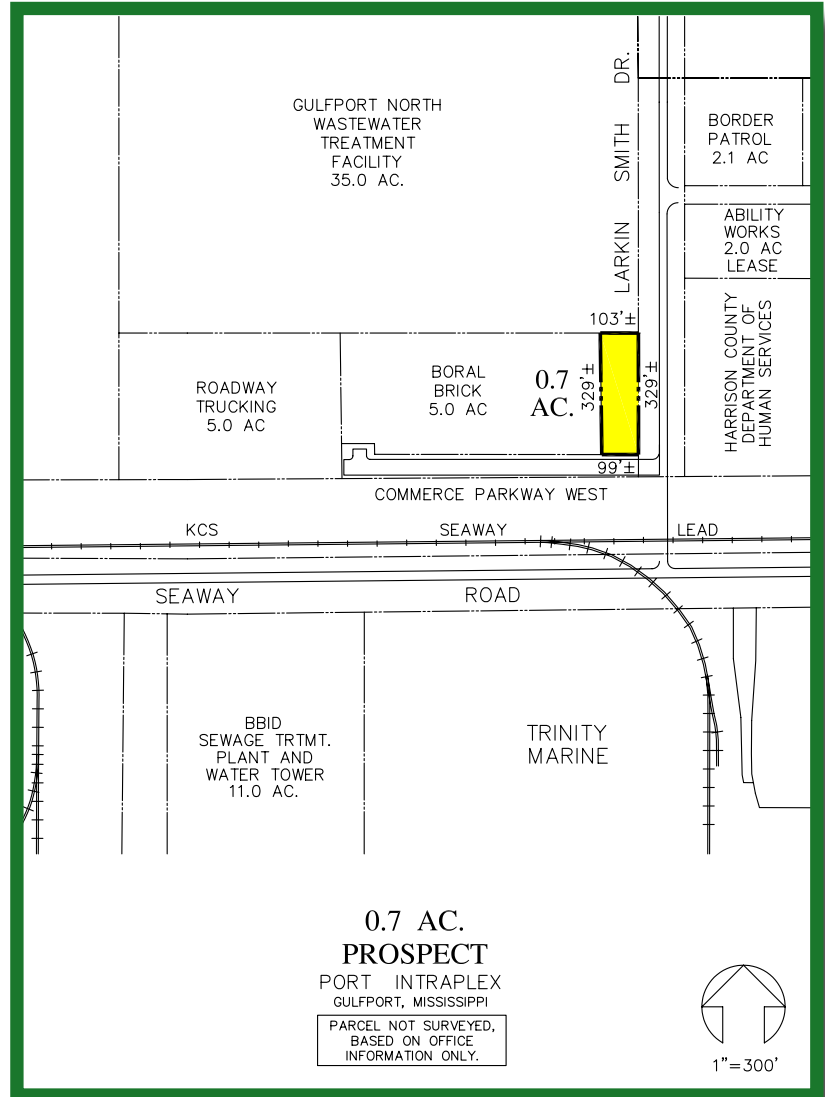


0.7 acre Available Land

Harrison County
 Bernard Bayou Industrial
 District
Larkin Smith Drive
Gulfport, MS 39503

Zoning: I-2
 Utilities: All
 Access: Adjacent to I-10
 Air Service: Gulfport-Biloxi
 International Airport
 Rail Service: No
 Site: Ready
 Price: Negotiable

Contact: Bill Hessell
HCDC
 228-896-5020
 bhessell@mscoast.org



HCDC
 Harrison County
 Development Commission
 12292 Intraplex Parkway
 Gulfport, MS 39503
 228-896-5020 • 228-896-6020
 mscoast.org